

SREEPATHY INSTITUTE OF MANAGEMENT AND TECHNOLOGY,
VAVANOOR

ALTERNATE SOURCES OF ENERGY AND ENERGY CONSERVATION MEASURES

1) Solar Energy

To make Clean & Green energy campus Sreepathy Institute of Management had installed 30KW Grid tied solar power plant in the Campus. This plant has to meet half the energy needs of the College. Solar plant had installed & commissioned by KSEB on January 2018. Approximately 120 units of Electrical Energy produced per day by this plant.

Details of 30KW Solar plant.

CAPACITY – 30KWp Solar Photo Voltaic Module

Make - Vikram Solar

Number of Panels – 95 Each Rated 320Wp

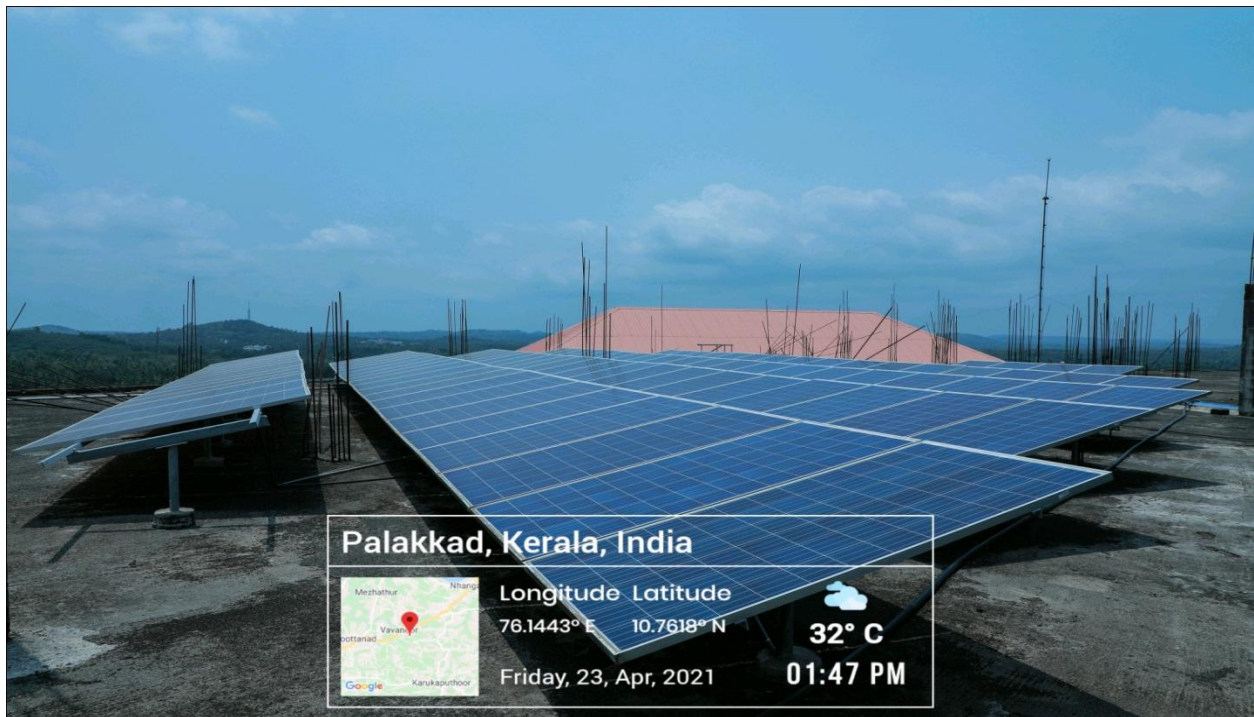
Open Circuit Voltage – 46 V

Short Circuit current – 9.03A

Rated Voltage & Current – 37.7V, 8.50A

Fill Factor = 77.74

Efficiency = 16.67%

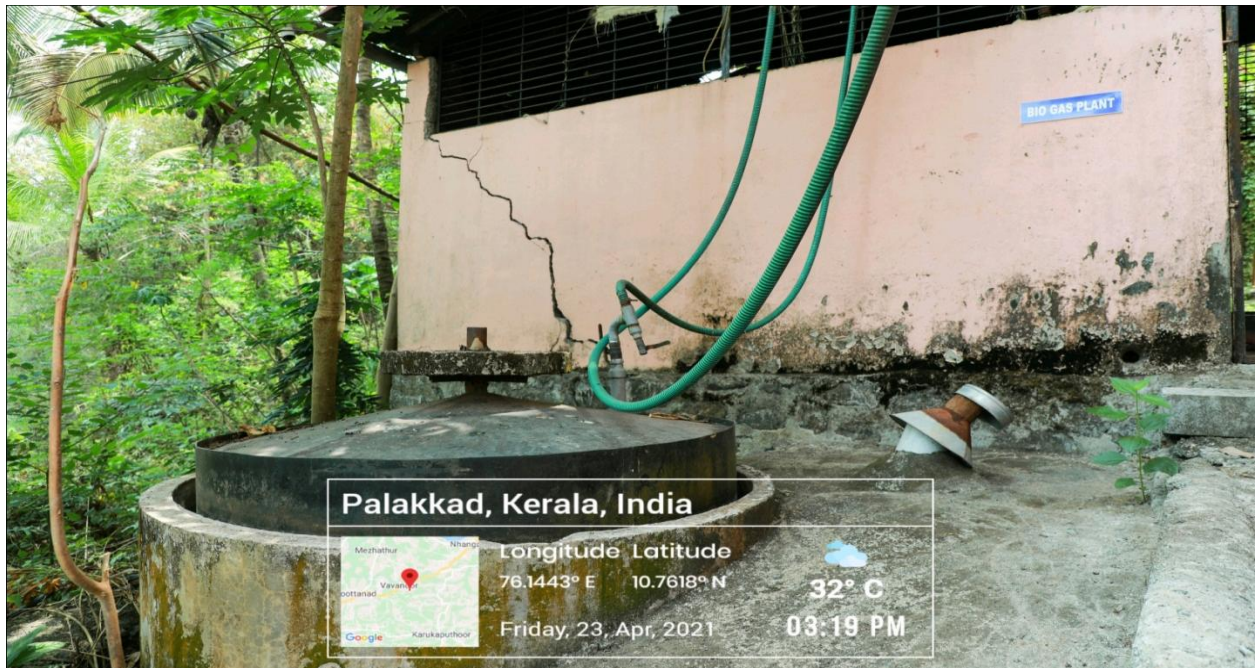


30KW Solar Plant on Rooftop



Grid tied solar inverter & solar DB

2) Bio Gas plant



Bio Gas plant at SIMAT

3) Wheeling to the Grid



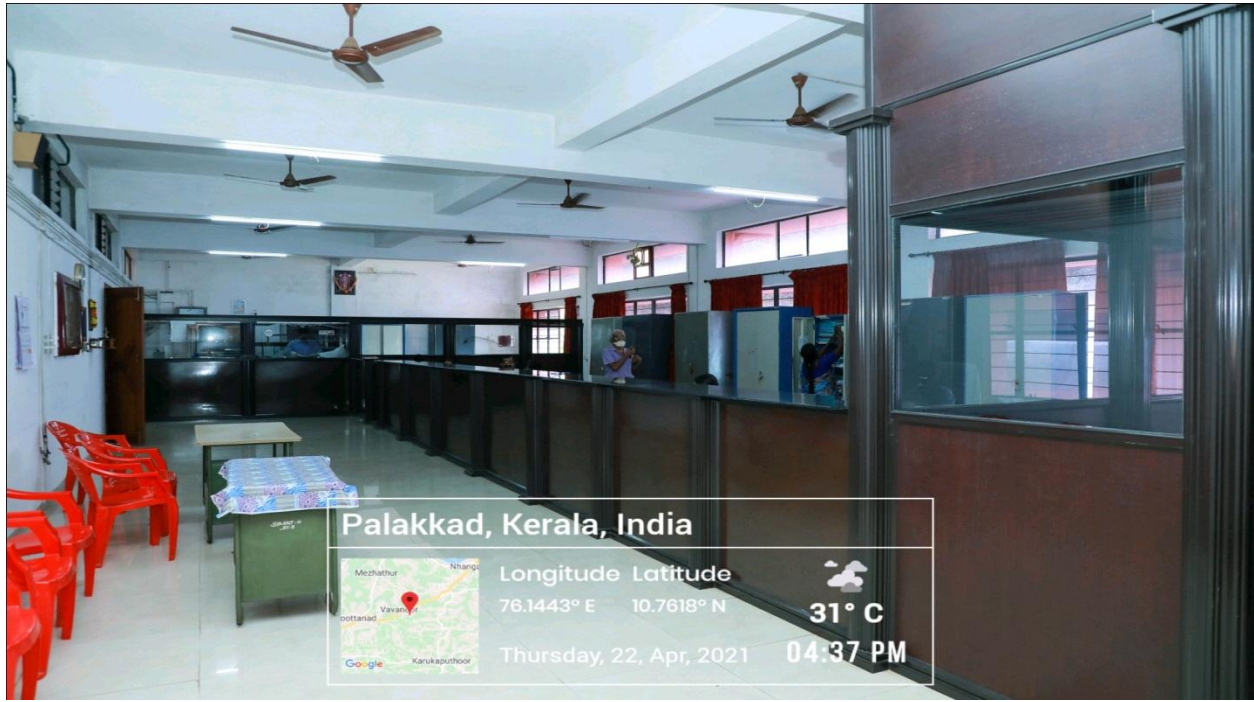
Grid tied inverter & Solar DB

4) Sensor based Energy conservation



Sensor based system for 1.5 KW Solar street lighting system

5) Use of LED lights



As per the Energy report from accredited energy auditor to conserve energy we changed Fluorescent tube light in the Office premises to Energy efficient LED Lights